

Research Article

Decreased Cortisol and Pain in Breast Cancer: Biofield Therapy Potential

Alice Running

College of Nursing No. 211, Montana State University, Bozeman, MT 59717-3560, USA

Correspondence should be addressed to Alice Running; alice.running@montana.edu

Received 19 December 2014; Accepted 17 March 2015

Academic Editor: Haroon Khan

Copyright © 2015 Alice Running. This is an open access article distributed under the Creative Commons Attribution License, which permits unrestricted use, distribution, and reproduction in any medium, provided the original work is properly cited.

Breast cancer is one of the leading causes of cancer death among women of all races. Pain is a common symptom associated with cancer; 75–90% of cancer patients experience pain during their illness and up to 50% of that pain is undertreated. Unrelieved pain leads to increased levels of the stress hormone cortisol. The purpose of this study was to examine the impact of bioenergy on fecal cortisol levels for mice injected with murine mammary carcinoma 4T1 in two separate pilot studies. Using a multiple experimental group design, six to eight week old female BALB/c mice were injected with tumor and randomly assigned, in groups of 10, to daily treatment, every other day treatment, and no treatment groups. Five days after tumor cell injection, bioenergy interventions were begun for a period of ten consecutive days. Fecal samples were collected for each study and ELISA analysis was conducted at the end of both studies. For both studies, cortisol levels were decreased in the every other day treatment groups but remained high in the no treatment groups. Future studies utilizing bioenergy therapies on cortisol levels in a murine breast cancer model can begin to describe pain outcomes and therapeutic dose.

1. Introduction

Breast cancer is the most common cancer diagnosis for women in the United States and is one of the leading causes of cancer death among women of all races. According to the Center for Disease Control and Prevention, 211,831 women in the United States were diagnosed with breast cancer in 2009 and 40,676 women in the United States died from that diagnosis [1]. Pain is a common symptom associated with cancer; 75–90% of cancer patients experience pain during their illness and up to 50% of that pain is undertreated [2]. Pain that continues or is unrelieved (up to 50%) significantly impacts the patient and his/her family, making the diagnosis of cancer and progression of the disease even more difficult [2]. Unrelieved pain has been linked to increased levels of stress, as measured by the stress hormone cortisol [3], and increased levels of anxiety. Opioids are recognized by the WHO as the first line of treatment for cancer pain. Opioid therapies are effective and are relied upon heavily for management of cancer pain, but these therapies are not without side effects such as constipation, urinary retention, nausea,

sedation, respiratory depression, myoclonus, delirium, sexual dysfunction, and hyperalgesia [3].

Complementary and Alternative Medicine (CAM) therapies are increasingly used by practitioners and patients alike to manage pain and are without the side effects known to be associated with opioids. In 1998, surveys on the use of CAM therapies by cancer patients were reported as high as 64% and as low as 7% [4]. According to the 2014 report by the National Cancer Institute at the National Institutes of Health, more than 50% of cancer patients use some form of CAM therapy [5]. CAM therapies that are found to be effective for pain related symptoms without the opioid side effects include acupuncture, biofield (Reiki, healing touch), massage, cranial stimulation, music therapy, and foot baths [6]. Acupuncture, biofield therapies, massage, and cranial stimulation remove or lessen blockages in pathways or channels that can lead to disruptions or disturbances in the flow of energy throughout the body. Once those blockages are removed, balance is restored to enable the body's innate tendency for healing to occur. More recently, psychoeducational interventions, Chinese herbal medicine, compound kushen injection, reflexology,

lycopene, TENS, qigong, cupping, cannabis, homeopathy (Traumeel), and creative arts have also been found to have some positive impact on cancer pain [7–11]. These therapies impact the flow of energy as well and promote homeostasis, balance, and relaxation which is believed to impact pain and stress in a significant way. An area of special interest to the National Center for Complementary and Integrative Medicine (NCCIM) is alleviating pain and inflammation processes which makes continued research in this area of particular importance [7].

Women fear breast cancer more than any other disease and their levels of breast cancer-specific intrusions are related to their increased stress and perceived risk of breast cancer [12]. Cortisol is viewed as a physiological marker of stress [12, 13]. Chronic stress and cortisol deregulation can influence inflammation and immune function in ways that promote fatigue, depression, and risk of cancer recurrence [14, 15]. The stress of advancing cancer and management of it is associated with endocrine and immune dysfunction that has significant, negative consequences for host resistance to cancer progression [16].

At least a third of all patients who undergo treatment for cancer develop psychological morbidity, persisting throughout the disease continuum from suspicion to diagnosis, treatment, and beyond [17]. Others would say that psychological symptoms of distress are reported in as many as 41% of patients with a new diagnosis of breast cancer [18]. In an earlier study, 49.6% of women with early breast cancer were clinically anxious and 37.2% were clinically depressed in the first three months following surgery [19]. Later studies would show that 48% of women diagnosed with early breast cancer were clinically anxious and/or depressed in the first year [19].

The impact of anxiety for breast cancer patients has the potential to impact treatment response, decision making, and overall quality of life [17, 20, 21]. High levels of stress reactivity have recently been related to poor compliance with medical care and low quality of life scores for breast cancer survivors [22].

Stress-induced immunosuppression associated with diagnosis and treatment of breast cancer is well established [23]. High levels of stress in cancer patients have also been shown to negatively impact the immune system leading to elevations in proinflammatory cytokines and stress hormones. Studies have also demonstrated a relationship between stress and decreased immune measurements, even describing a relationship between the types of stress (acute versus chronic) involved and decreased function of immune systems [23–31]. Complementary alternative modalities, in particular bioenergy therapies, are showing promise in their abilities to mediate the impact of these dysfunctions.

Biofield modalities are putative in nature, meaning they are yet to be measured using Western empirical measures. Practices based on putative energy fields (also called biofields) generally reflect the concept that human beings are infused with subtle forms of energy. Practitioners are thought to modulate human biofields by identifying and then removing energy movement blockages. Some would argue that because this energy has never been demonstrated beyond

a reasonable doubt, it lacks biological plausibility [32]. However patients continue to seek out these modalities and more sophisticated research methods are leading to a body of evidence that would support continued inquiry into the practice and results of bioenergy.

As reviewed above, stress and increased cortisol can negatively impact pain, immune function, and influence the formation and growth of cancers. Because stress hormones (like cortisol) are known to enhance tumor growth, angiogenesis, and invasion as well as impair cellular immune responses, a variety of cancer growth processes may be blunted and immunity supported by biofield therapies [17, 28, 32–37].

Published reviews regarding the utility of CAM therapies, to include bioenergy studies, have concluded that more research is needed to demonstrate, more specifically, the efficacy, meaning, and underlying mechanisms influenced by energy therapies and invited a more expansive view of what constitutes evidence. These reviews have recommended continued examination of specific biomarkers associated with stress and relaxation response systems to assist in determining the impact of biofield therapies on physiology and concluded that because of small sample size, high heterogeneity across studies, and high risk of bias for primary studies they could not recommend any CAM interventions for adult cancer pain. Murine models may be one mechanism that can begin to address some of these issues.

The current study explores the effects of biofield therapies on cortisol levels in mice injected with breast cancer cells. Aims of the study are as follows.

- (1) To determine whether mice injected with breast cancer cells and then treated with bioenergy demonstrate decreased levels of cortisol.
- (2) To determine if the results of the first study could be replicated with a different bioenergy practitioner.

2. Materials and Methods

2.1. Design. This study used a randomized, two-group repeated measures design. In two separate studies, two groups of interventional mice (daily healing touch and every other day healing touch) were compared to each other and to a group of untreated mice. Data were collected at two points: day 3 (before treatment) and day 12 (after treatment) (Figure 1).

2.2. Samples. For each study, thirty-six- to eight-week-old BALB/c mice (15–25 g) were obtained from Charles River Laboratories. The mice were housed in a ventilated barrier rack in a temperature controlled facility on a 12h photoperiod. The mice were given food and water ad libitum. This research was conducted under a protocol approved by the Montana State University, Bozeman Institutional Animal Care and Use Committee (IACUC).

The 6-thioguanine-resistant 4T1 mouse mammary carcinoma cell line was obtained from the American Type Culture Collection (Rockville, MD) and grown in RPMI 1640 medium supplemented with 10% fetal bovine serum and

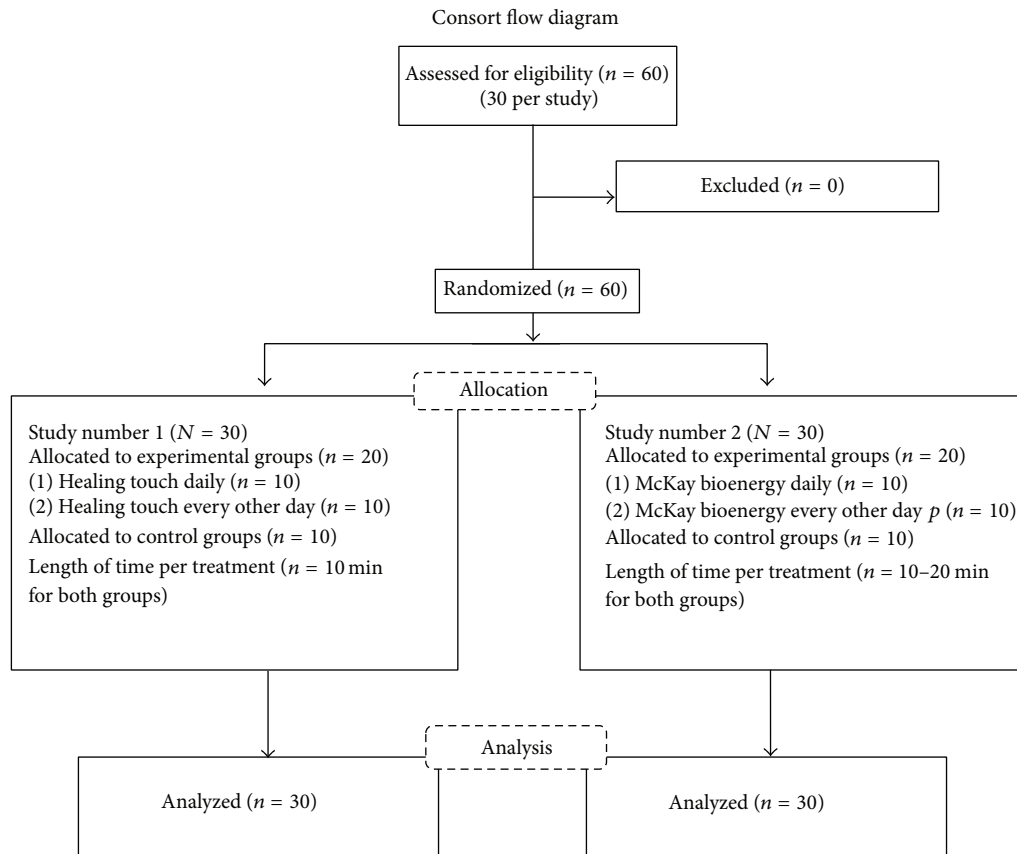


FIGURE 1: Consort Flow Diagram.

1% each of essential amino acids, L-glutamine, penicillin/streptomycin, and 10 mM HEPES. Cells were harvested for injection with 1X Trypsin/EDTA (Corning) to detach cells from the flask. Cells were then washed three times with Dulbecco's PBS and resuspended in DPBS for injection.

2.3. Procedure. Mice were randomly assigned to cages (five mice per cage, two cages per group, as per power analysis and literature review) when they arrived to the Animal Resource Center (ARC) and remained in those groups for the duration of the study. Five days after arrival, allowing time for acclimation to the ARC and their group, each mouse was injected with 100,000 cells of 4T1 murine mammary breast cancer tumor subcutaneously in 0.1 mL in the lower right mammary gland (day 1). Five days after injection (day 5), allowing time for tumor establishment, the intervention for each group began and continued for ten consecutive days.

Study one employed a certified healing touch practitioner. Group 1 received bioenergy treatment daily, group 2 received bioenergy treatment every other day, while group 3 received no treatment. The literature is not clear on duration of therapeutic treatment time. After consulting with an animal healing touch practitioner and reviewing the literature, it was decided to set a treatment time of 10 minutes per group.

Study two employed a bioenergy practitioner trained in The McKay method. Following the same procedure, group 1 received bioenergy treatment daily and group 2 received

bioenergy treatment every other day, while group 3 received no treatment. For this study, treatment time lasted 10–20 minutes depending on the practitioner's daily assessment.

For each study, at the same time every day, the researcher would gown, enter the room where the mice were kept, glove, turn on the air exchange fan in the biosafety hood, move the appropriate cages from the rack, and place them under the hood. For each intervention group, the two cages (five mice in each cage) were placed side by side under the air exchange hood. Once the cages were placed under the hood, the plastic cover of the cage, along with the water which is kept inside the cage, was moved to the side of the hood leaving the metal slotted cover over each cage intact providing access to the mice for the practitioner. The researcher would then leave the room and the bioenergy practitioner would gown, enter the room, and prepare for the session (Figure 2).

Each healer prepared for the session by centering and aligning themselves, attuning to the mice and assessing their energy fields. The bioenergy practitioners then used a "hand scan" over the cages to determine levels of energy or auric field for each group. The practitioner would then "hold the field" to intensify energy to the mice and use "pain drain" to drain away irregularity from a specific or general area of the mouse bodies. "Hands in motion" would then be used to soothe and calm the field, and "hands still" was used to energize the spleen and adrenals. At no time did the practitioner come in physical contact with any of the experimental mice.

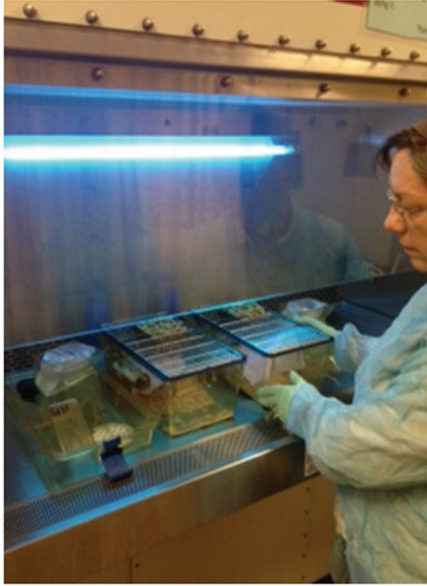


FIGURE 2: Practitioner setup for bioenergy intervention.

At the end of each treatment the practitioner would acknowledge the contribution of the mice, remove themselves from the mouse energy field, and leave the room. The researcher would return to the room, replace the water and plastic cover over each of the mice cages, and place the mice back in the same spot on the rack.

On day 3 and day 12 (three hours after receiving the bioenergy treatment) fecal samples were collected from each of the intervention and control mice. Stool samples were stored at -80 until analyzed. On day 15 of each study all of the mice were euthanized following IACUC protocol.

2.4. Extraction and Analysis of Fecal Cortisol. Fecal samples were weighed and then homogenized in 1 mL of 80% methanol. Samples were then shaken for 30 minutes on a multivortex. After shaking, samples were centrifuged for 10 min at 2500 g. An aliquot of each supernatant was then diluted (1:5) in assay buffer and analyzed by ELISA (Cortisol EIA kit, Enzo Life Sciences, Farmingdale, NY) as recommended by manufacturer.

2.5. Statistical Analyses. Statistical analyses were performed using Prism 4 (GraphPad Software, San Diego, CA). Fecal cortisol levels were compared by two-way ANOVA.

3. Results and Discussion

The goal of the first study was to determine if cortisol levels in mice with cancer could be influenced by healing touch. Fecal cortisol levels of pooled fecal matter from each cage of mice (2 cages/group) were examined at two time points. The first was two days after tumor injection and two days before the first treatment (day 3) and the second was near the end of the experiment, seven days after treatment began (day 12).

At day 3, the fecal cortisol levels (measured as pg/mL/g) for the untreated ($\bar{x} = 167958.2$ and $SD = 87684.2$), every other day treatment ($\bar{x} = 169258.9$ and $SD = 80096.4$), and daily treatment ($\bar{x} = 134221.5$ and $SD = 96297.9$) groups were similar (Figure 3(a)). However, at day 12, fecal cortisol levels appeared to be lower in the every other day ($\bar{x} = 55784.7$ and $SD = 13396.8$) and daily ($\bar{x} = 70997.9$ and $SD = 31523.8$) treatment groups compared to the untreated group ($\bar{x} = 154480.9$ and $SD = 9562.4$). In addition, fecal cortisol levels appeared to be reduced between day 3 and day 12 in the every other day and daily treatment groups, but not the untreated group. The data was not statistically significant, likely due to the small number of samples per group, but these data provided preliminary evidence that cortisol levels in mice with cancer could be influenced by healing touch.

In study 2, we analyzed the cortisol levels of each mouse and enhanced our sample numbers (9 or 10 mice/group). We also wanted to determine if we could get similar results to the first study with a different practitioner. Before treatment, at day 3, fecal cortisol levels were higher in the every other day ($\bar{x} = 246525.3$ and $SD = 229323.6$) and daily treatment ($\bar{x} = 151709.3$ and $SD = 118512.0$) groups than the untreated group ($\bar{x} = 55104.3$ and $SD = 61825.2$) (Figure 3(b)). This difference was statistically significant between the untreated and every other day treatment group. However, after treatment, on day 12, fecal cortisol levels were actually lower in the every other day ($\bar{x} = 134028.0$ and $SD = 86815.5$) and daily treatment ($\bar{x} = 196557.1$ and $SD = 122664.4$) groups compared to the untreated group ($\bar{x} = 307396.8$ and $SD = 255547.9$). Again, this difference was statistically significant between the untreated and every other day treatment groups. Furthermore, fecal cortisol levels significantly increased in the untreated group between days 3 and 12, but not in the treated groups.

Bioenergy interventions were successful, in two separate pilot studies with two different practitioners, at reducing the levels of cortisol in female mice injected with mammary carcinoma 4T1 compared to untreated mice. These data are in agreement with what has been observed in clinical studies [11, 13–15, 20, 25–30]. While the first study results were not statistically significant, the direction of the relationship was compelling and the results from the second study further supported these preliminary findings.

In both studies, the mice receiving bioenergy treatments every other day had the lowest cortisol levels towards the end of the experiment. This suggests that there may be a dose effect to bioenergy interventions, but further studies would be needed to confirm this. Altogether, these data provide preliminary evidence that murine models may be a useful tool for exploration into the efficacy and mechanisms of action of bioenergy interventions on stress and possibly other physiological responses. Future studies that build on these findings are in line with NCCAMs call for the employment of animal models and methodology in basic and translational research to study the biological effects and mechanisms of action underlying CAM approaches [6].

Sample sizes for the two studies, though small, were typical for murine research and pilot studies. Cortisol levels are known to be variable, and in murine models there are no

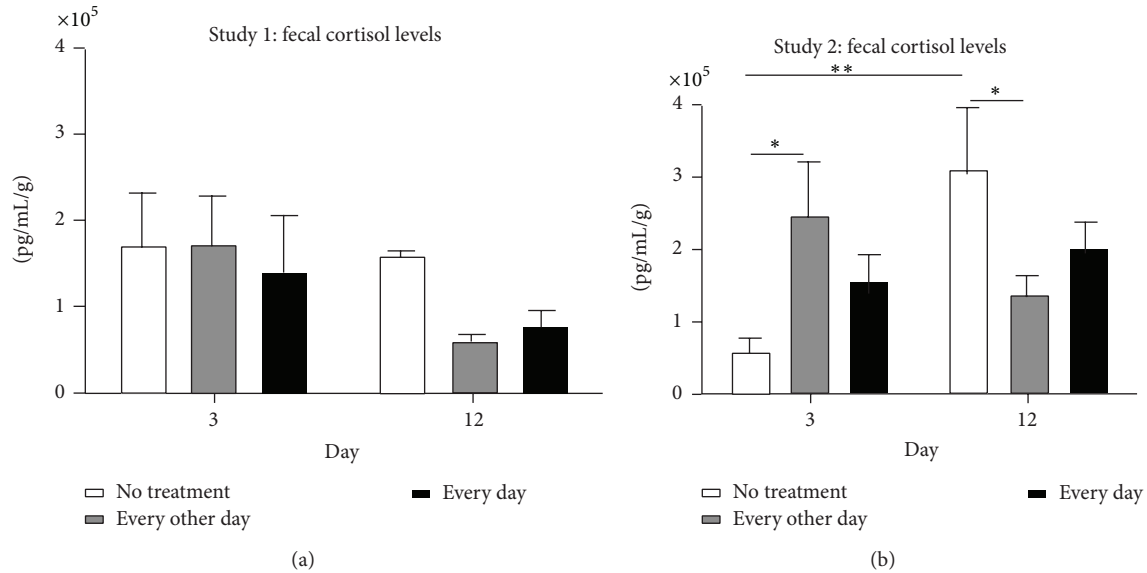


FIGURE 3: Fecal cortisol levels measured by ELISA. (a) Study 1 levels for untreated group ($n = 2$), every other day treatment group ($n = 2$), and daily treatment group ($n = 2$). (b) Study 2 levels for untreated group ($n = 9$), every other day treatment group ($n = 10$), and daily treatment group ($n = 10$). The data are expressed as mean \pm SEM. Statistical significance was measured by two-way ANOVA with Bonferroni posttest. * $P < 0.05$, ** $P < 0.01$.

indicators available for normal cortisol levels or ranges, so normal values are not available for comparison.

4. Conclusions

Both of the aims developed for this study were accomplished. Through this research we were able to prove that mice injected with breast cancer cells and then treated with bioenergy demonstrated decreased levels of cortisol. Though the statistical significance for the first study was not as strong as the second, in both studies the cortisol levels decreased. These results would support earlier studies reporting the effectiveness of bioenergy on cortisol levels, stress, and immune function.

In regard to the second aim, a second bioenergy practitioner was able to achieve more significant results. As described in the methodology section, each practitioner employed the same techniques, but in the second study the practitioner was able to extend the time of the intervention. Because of the need for information on therapeutic dose and outcomes, the results of this study can be used in future protocol development.

The provision of complementary alternative modalities for women with breast cancer must include evidence either supporting or negating its impact. Incorporating a CAM modality such as bioenergy, with evidence from rigorous controlled studies, could have far reaching practice implications. Continued research into dose, length of treatment, and other variables which could impact efficacy as well as mechanisms of action is needed to optimize its use in the relief of pain and the provision of care for cancer patient. These studies can be difficult to perform in clinical settings. The results presented here, while limited in scope, provide evidence that

larger scale studies in murine models could be used to address some of these questions and further examine the impact of bioenergy interventions in disease models. This knowledge could then potentially be translated into clinical studies to provide further evidence for practice. Because cancer pain will be experienced by as many as 90% of patients and because there are no known parameters for therapeutic dose for many CAM therapies, scientists and practitioners must work together developing and testing safe interventions to address this statistic. These pilot studies are a first step in that process.

Conflict of Interests

The author declares that there is no conflict of interests regarding the publication of this paper.

Acknowledgments

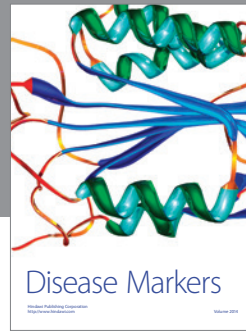
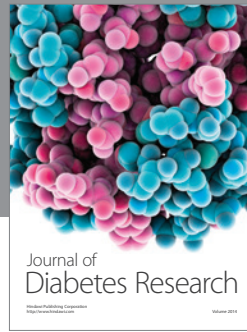
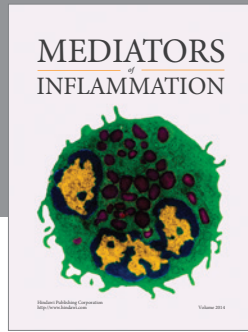
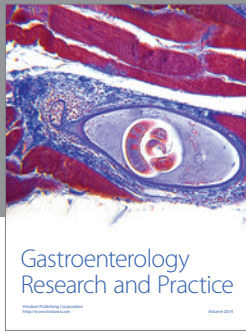
This work was supported by NIH NCCAM 1R15AT003591-01A2. Bioenergy interventions were provided by Carol Lewis, RN, CHT practitioner, and Bear McKay, the McKay Method founder. ELISA and statistical analysis were provided by Andrew Ramstead, Doctoral Student at Montana State University, Bozeman, MT.

References

- [1] U.S. Cancer Statistics Working Group, *United States Cancer Statistics: 1999–2009 Incidence and Mortality Web-based Report*, Department of Health and Human Services, Centers for Disease Control and Prevention, and National Cancer Institute, Atlanta, Ga, USA, 2013, <http://www.cdc.gov/cancer/breast/statistics/>.

- [2] A. Running and T. Seright, "Integrative oncology: managing cancer pain with complementary and alternative therapies," *Current Pain and Headache Reports*, vol. 16, no. 4, pp. 325–331, 2012.
- [3] Y. Bao, X. Kong, L. Yang et al., "Complementary and alternative medicine for cancer pain: an overview of systematic reviews," *Evidence-Based Complementary and Alternative Medicine*, vol. 2014, Article ID 170396, 9 pages, 2014.
- [4] E. Ernst and R. Cassileth, "The prevalence of complementary/alternative medicine in cancer: a systematic review," *Cancer*, vol. 83, no. 4, pp. 777–782, 1998.
- [5] M. Horneber, G. Bueschel, G. Dennert, D. Less, E. Ritter, and M. Zwahlen, "How many cancer patients use complementary and alternative medicine: a systematic review and metaanalysis," *Integrative Cancer Therapies*, vol. 11, no. 3, pp. 187–203, 2012.
- [6] R. R. Induru and R. L. Lagman, "Managing cancer pain: frequently asked questions," *Cleveland Clinic Journal of Medicine*, vol. 78, no. 7, pp. 449–464, 2011.
- [7] National Center for Complementary and Integrative Health, *Research Funding Priorities*, 2015, <http://nccih.nih.gov/grants/priorities>.
- [8] E. Ozyuvaci, N. Y. Alnigenis, and A. Altan, "The effect of transdermal fentanyl treatment on serum cortisol concentrations in patients with non-cancer pain," *Journal of Pain and Symptom Management*, vol. 28, no. 3, pp. 277–281, 2004.
- [9] L. M. Thornton, B. L. Andersen, and W. P. Blakely, "The pain, depression and fatigue symptom cluster in advanced breast cancer: Covariation with the hypothalamic-pituitary-adrenal axis and the sympathetic nervous system," *Health Psychology*, vol. 29, no. 3, pp. 333–337, 2010.
- [10] R. Dev, D. Hui, S. Dalal et al., "Association between serum cortisol and testosterone levels, opioid therapy, and symptom distress in patients with advanced cancer," *Journal of Pain and Symptom Management*, vol. 41, no. 4, pp. 788–794, 2011.
- [11] N. Kumar, S. Bhatnagar, T. Velpandian et al., "Randomized controlled trial in advance stage breast cancer patients for the effectiveness on stress marker and pain through Sudarshan Kriya and Pranayam," *Indian Journal of Palliative Care*, vol. 19, no. 3, pp. 180–185, 2013.
- [12] L. Dettenborn, G. D. James, H. B. Valdimarsdottir, G. H. Montgomery, and D. H. Bovbjerg, "Breast cancer-specific intrusions are associated with increased cortisol responses to daily life stressors in healthy women without personal or family histories of breast cancer," *Journal of Behavioral Medicine*, vol. 29, no. 5, pp. 477–485, 2006.
- [13] H. C. Abercrombie, J. Giese-Davis, S. Sephton, E. S. Epel, J. M. Turner-Cobb, and D. Spiegel, "Flattened cortisol rhythms in metastatic breast cancer patients," *Psychoneuroendocrinology*, vol. 29, no. 8, pp. 1082–1092, 2004.
- [14] J. Banasik, H. Williams, M. Haberman, S. E. Blank, and R. Bendel, "Effect of Iyengar yoga practice on fatigue and diurnal salivary cortisol concentration in breast cancer survivors," *Journal of the American Academy of Nurse Practitioners*, vol. 23, no. 3, pp. 135–142, 2011.
- [15] L. M. Thornton, B. L. Andersen, and W. E. Carson III, "Immune, endocrine, and behavioral precursors to breast cancer recurrence: a case-control analysis," *Cancer Immunology, Immunotherapy*, vol. 57, no. 10, pp. 1471–1481, 2008.
- [16] D. Spiegel, "Mind matters in cancer survival," *Psycho-Oncology*, vol. 21, no. 6, pp. 588–593, 2012.
- [17] A. E. Pedersen, J.-A. Sawatzky, and T. F. Hack, "The sequelae of anxiety in breast cancer: a human response to illness model," *Oncology Nursing Forum*, vol. 37, no. 4, pp. 469–475, 2010.
- [18] S. Brem and N. B. Kumar, "Management of treatment-related symptoms in patients with breast cancer: current strategies and future directions," *Clinical Journal of Oncology Nursing*, vol. 15, no. 1, pp. 63–71, 2011.
- [19] A. Hall, R. A'Hern, and L. Fallowfield, "Are we using appropriate self-report questionnaires for detecting anxiety and depression in women with early breast cancer?" *European Journal of Cancer*, vol. 35, no. 1, pp. 79–85, 1999.
- [20] J. M. Andreano, J. Waisman, L. Donley, and L. Cahill, "Effects of breast cancer treatment on the hormonal and cognitive consequences of acute stress," *Psycho-Oncology*, vol. 21, no. 10, pp. 1091–1098, 2012.
- [21] G. Costa-Requena, A. Rodríguez, and P. Fernández-Ortega, "Longitudinal assessment of distress and quality of life in the early stages of breast cancer treatment," *Scandinavian Journal of Caring Sciences*, vol. 27, no. 1, pp. 77–83, 2012.
- [22] K. H. Karvinen, N. P. Murray, H. Arastu, and R. R. Allison, "Stress reactivity, health behaviors, and compliance to medical care in breast cancer survivors," *Oncology nursing forum*, vol. 40, no. 2, pp. 149–156, 2013.
- [23] V. L. Green, A. Alexandropoulou, M. B. Walker et al., "Alterations in the Th1/Th2 balance in breast cancer patients using reflexology and scalp massage," *Experimental and Therapeutic Medicine*, vol. 1, no. 1, pp. 97–108, 2010.
- [24] B. L. Mundy-Bosse, L. M. Thornton, H.-C. Yang, B. L. Andersen, and E. William, "Psychological stress is associated with altered levels of myeloid-derived suppressor cells in breast cancer patients," *Cellular Immunology*, vol. 270, no. 1, pp. 80–87, 2011.
- [25] T. B. Herbert and S. Cohen, "Stress and immunity in humans: a meta-analytic review," *Psychosomatic Medicine*, vol. 55, no. 4, pp. 364–379, 1993.
- [26] S. C. Segerstrom and G. E. Miller, "Psychological stress and the human immune system: a meta-analytic study of 30 years of inquiry," *Psychological Bulletin*, vol. 130, no. 4, pp. 601–630, 2004.
- [27] R. H. Matousek, J. C. Pruessner, and P. L. Dobkin, "Changes in cortisol awakening response (CAR) following participation in mindfulness-based stress reduction in women who completed treatment for breast cancer," *Complementary Therapies in Clinical Practice*, vol. 17, no. 2, pp. 65–70, 2011.
- [28] S. Jain, D. Pavlik, J. Distefan et al., "Complementary medicine for fatigue and cortisol variability in breast cancer survivors: a randomized controlled trial," *Cancer*, vol. 118, no. 3, pp. 777–787, 2012.
- [29] L. K. Hart, M. I. Freel, P. J. Haylock, and S. K. Lutgendorf, "The use of healing touch in integrative oncology," *Clinical Journal of Oncology Nursing*, vol. 15, no. 5, pp. 519–525, 2011.
- [30] S. A. Mitchell, S. L. Beck, L. E. Hood, K. Moore, and E. R. Tanner, "Putting evidence into practice: evidence-based interventions for fatigue during and following cancer and its treatment," *Clinical Journal of Oncology Nursing*, vol. 11, no. 1, pp. 99–113, 2007.
- [31] E. Jackson, M. Kelley, P. McNeil, E. Meyer, L. Schlegel, and M. Eaton, "Does therapeutic touch help reduce pain and anxiety in patients with cancer?" *Clinical Journal of Oncology Nursing*, vol. 12, no. 1, pp. 113–120, 2008.

- [32] E. Ernst and R. Seip, "An independent review of studies of 'energy medicine' funded by the US National Center for Complementary and Alternative Medicine," *Focus on Alternative and Complementary Therapies*, vol. 16, no. 2, pp. 106–109, 2011.
- [33] D. W. Wardell and K. F. Weymouth, "Review of studies of healing touch," *Journal of Nursing Scholarship*, vol. 36, no. 2, pp. 147–154, 2004.
- [34] S. Jain and P. J. Mills, "Biofield therapies: helpful or full of hype? A best evidence synthesis," *International Journal of Behavioral Medicine*, vol. 17, no. 1, pp. 1–16, 2010.
- [35] R. Agdal, J. V. B. Hjelmborg, and H. Johannessen, "Energy healing for cancer: a critical review," *Forschende Komplementarmedizin*, vol. 18, no. 3, pp. 146–154, 2011.
- [36] A. B. Coakley and A. M. Barron, "Energy therapies in oncology nursing," *Seminars in Oncology Nursing*, vol. 28, no. 1, pp. 55–63, 2012.
- [37] J. G. Anderson and A. G. Taylor, "Effects of healing touch in clinical practice: a systematic review of randomized clinical trials," *Journal of Holistic Nursing*, vol. 29, no. 3, pp. 221–228, 2012.



Hindawi
Submit your manuscripts at
<http://www.hindawi.com>

